

# Swivel castor QD 151 ZK

Extra Heavy Duty Series QD - Wheel Z

-30 °C - +80 °C

+++  
swivels easily

+++  
wear resistant

+++  
shock proof

+++  
floor protective

+++  
weather proof

## Wheel



Tread: Cast polyurethane, 95±3 Shore A

Wheel centre, Cast-iron - painted

## Fork



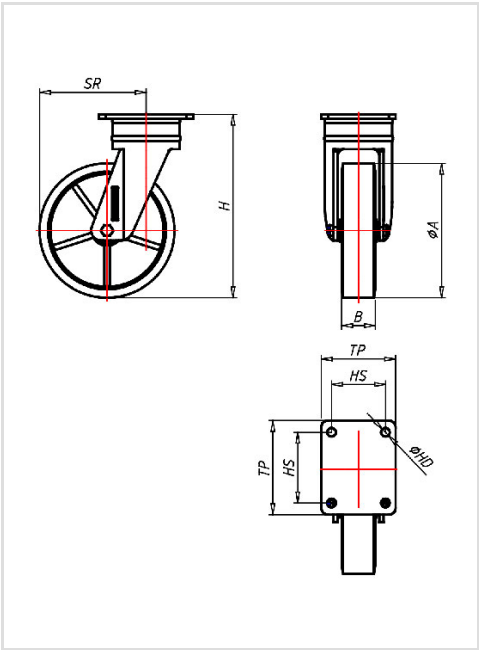
Pressed steel welded construction,  
with axial ball bearing and tapered roller bearing,  
dust protection ring,  
very strong integrated Kingpin,  
grease nipple,  
wheel axle with self-locking nut finish: zinc plated

Swivel castor	Wheel-Ø A x width B mm: 150x50
Load Capacity kg:	700
Load capacity tested according to EN 12530 and EN 12527	
Overall height H mm:	200
Dimension of top plate TP mm:	150x110
Hole spacing HS mm:	105x80/121x59
Hole-Ø HD mm:	12,5
Swivel radius SR mm:	111
Wheel bearing:	Ball bearing

## Advantages

- ✓ silent in motion
- ✓ low rolling resistance
- ✓ high abrasion and tear resistance
- ✓ high resistance to shocks
- ✓ good chemical resistance

©Copyright 2024 Rollenbau GmbH, www.rollenbau.at 20.05.2024



## Applications

- Heavy duty dollies
- Trash container trucks
- Machinery moving dollies
- Racks